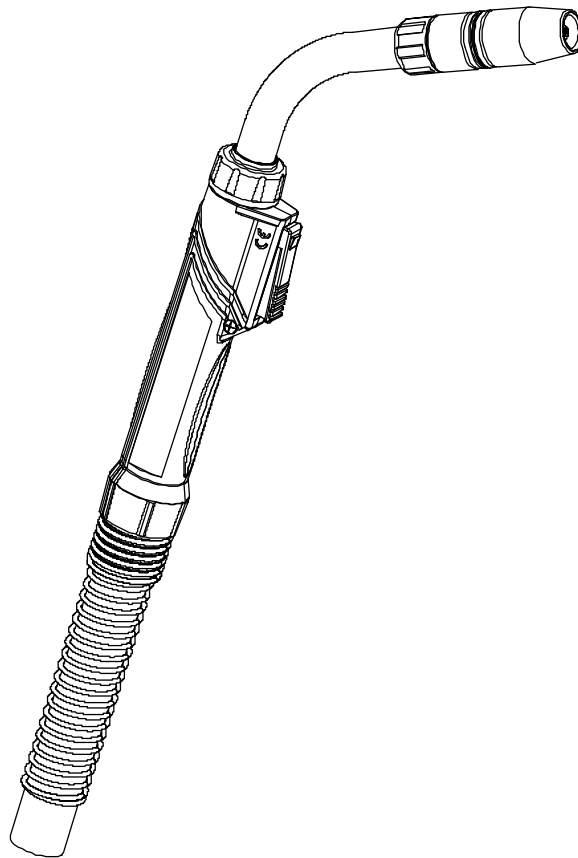




## SPEC SHEET

**For 400 amp**

**T-Gun™ Semi-Automatic Compact  
Series Water-Cooled MIG Guns**



### AMPERAGE RATINGS

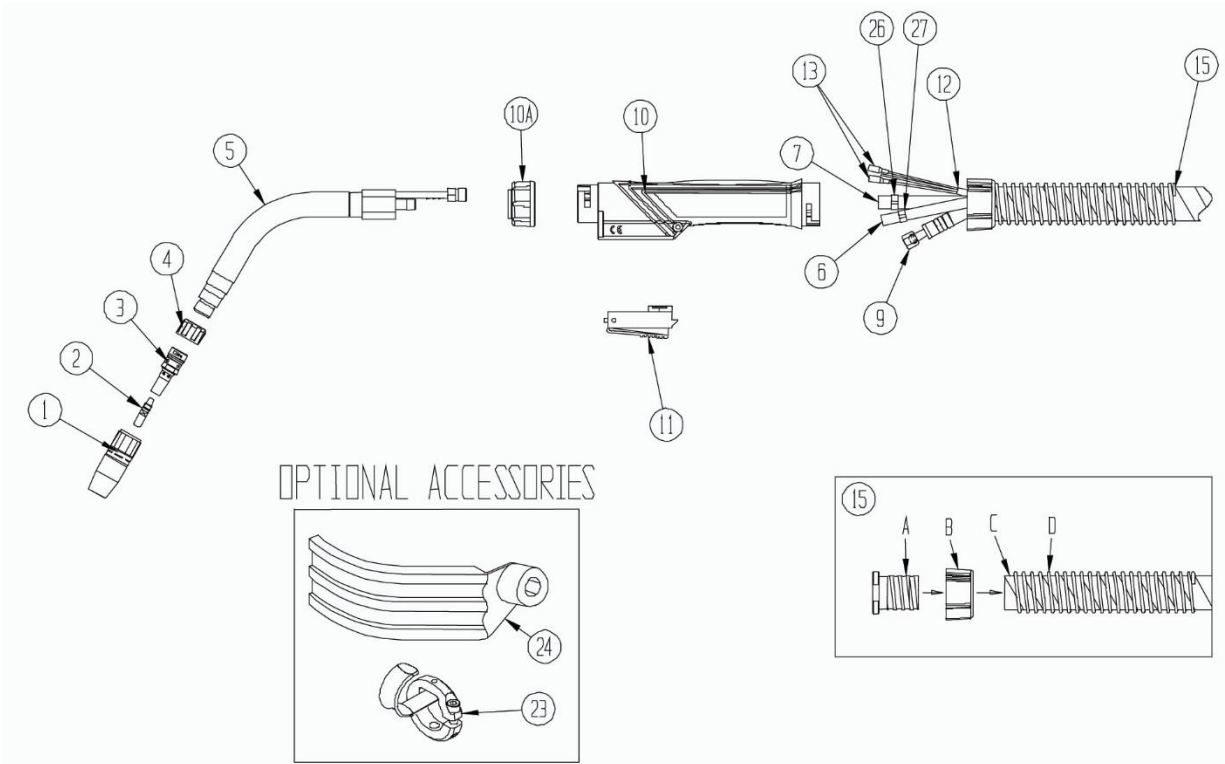
GUN MODEL	60% DUTY CYCLE - MIXED GASES OR 100% DUTY CYCLE - CO <sub>2</sub>
400 amp	400 amp

**NOTE:** Ratings are based on tests that comply with IEC 60974-7 standards.

### STANDARD PARTS

GUN MODEL	NECK	NOZZLE	RETAINING HEAD	NECK INSULATOR	CONTACT TIPS
400 amp	455-60	401-6-62	404-20	402-7	403-20-xx

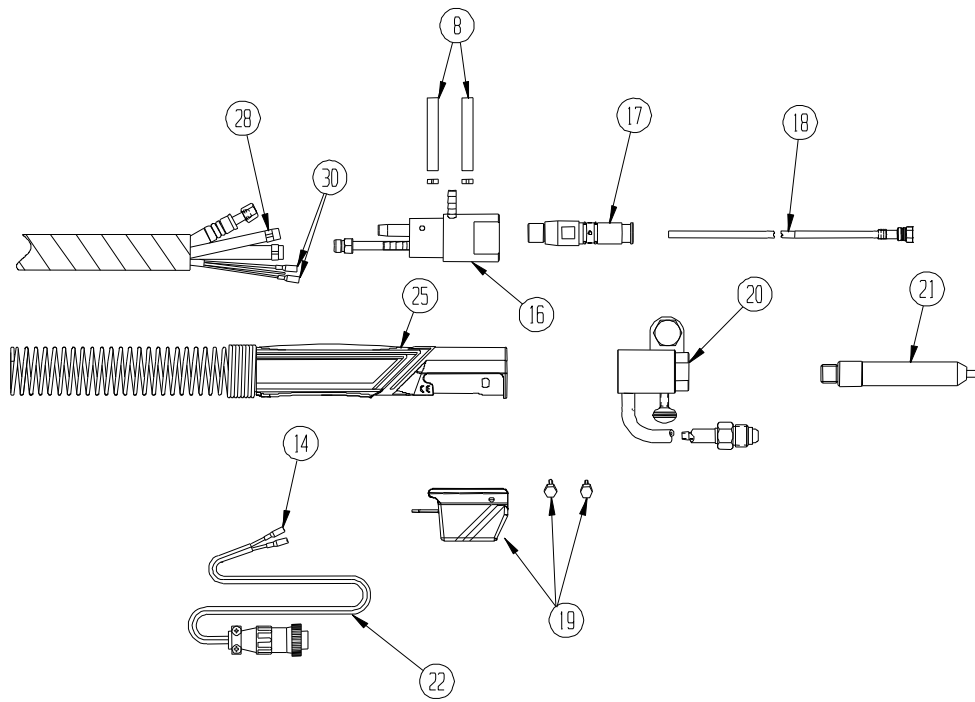
EXPLODED VIEW AND PARTS LIST



Numbers in this column correspond to the exploded view images above.

ITEM	PART #	DESCRIPTION
1	401-40-38	STANDARD NOZZLES (SELF-INSULATED)
	401-4-38	SUPER TAPERED NOZZLE - 3/8" BORE (BRASS)
	401-4-50	3/8" (10 mm) BORE - FLUSH TIP
	401-4-62	1/2" (13 mm) BORE - 1/8" (3 mm) TIP RECESS
	401-4-62	5/8" (16 mm) BORE - 1/8" (3 mm) TIP RECESS
	401-4-75	3/4" (19 mm) BORE - 1/8" (3 mm) TIP RECESS
	401-8-62	SHORT ARC NOZZLE
	401-8-62	5/8" (16 mm) BORE - 1/8" (3 mm) TIP STICKOUT
	401-5-62	HEAVY DUTY NOZZLES (SELF-INSULATED)
	401-5-62	5/8" (16 mm) BORE - 1/4" (6 mm) TIP RECESS
	401-5-75	3/4" (19 mm) BORE - 1/4" (6 mm) TIP RECESS
	401-6-50	1/2" (13 mm) BORE - 1/8" (3 mm) TIP RECESS
	401-6-62	5/8" (16 mm) BORE - 1/8" (3 mm) TIP RECESS
	401-6-75	3/4" (19 mm) BORE - 1/8" (3 mm) TIP RECESS
	401-7-62	5/8" (16 mm) BORE - 1/4" (6 mm) TIP RECESS (BRASS)
	401-7-87	7/8" (22 mm) BORE - 1/4" (6 mm) TIP RECESS (BRASS)
2		HEAVY DUTY TREGASKISS™ TOUGH LOCK™ CONTACT TIPS - 5/16" (7.9 mm) O.D.
	403-20-30	FOR .030" (0.8 mm) WIRE
	403-20-35	FOR .035" (0.9 mm) WIRE
	403-20-1.0	FOR 1 mm WIRE
	403-20-45	FOR .045" (1.2 mm) WIRE
	403-20-364	FOR 3/64" (1.2 mm) WIRE
	403-20-1.4	FOR 1.4 mm WIRE
	403-20-52	FOR .052" (1.3 mm) WIRE
	403-20-116	FOR 1/16" (1.6 mm) WIRE
	403-20-564	FOR 5/64" (2.0 mm) WIRE
	403-20-332	FOR 3/32" (2.4 mm) WIRE
		HEAVY DUTY TAPERED TREGASKISS TOUGH LOCK CONTACT TIP - 5/16" (7.9 mm) O.D.
	403-21-30	FOR .030" (0.8 mm) WIRE
	403-21-35	FOR .035" (0.9 mm) WIRE
	403-21-1.0	FOR 1 mm WIRE
	403-21-45	FOR .045" (1.2 mm) WIRE

ITEM	PART #	DESCRIPTION
3	404-20	TREGASKISS TOUGH LOCK RETAINING HEAD - FOR HD TIPS
	454-1-2	RETAINING RING
	402-6	O-RING
4	402-7	NECK INSULATOR
5		NECKS (INCL. C/W (1) 357-2 AND (1) 413-5 CLAMP)
	445-45	NECK - 45°
	445-60	NECK - 60°
6	656-15	INTERNAL WATER LINE (INCL. C/W (1) 357-2 CLAMP FOR FRONT & (1) 656-1 CLAMP FOR REAR)
		15' SERVICE (CUT FOR OTHER LENGTHS)
7	657-15	CONDUIT (INCL. C/W (2) 657-1 CLAMPS)
		15' SERVICE (CUT FOR OTHER LENGTHS)
8	658	RED WATER INE - OUT (C/W (1) 656-1 CLAMP)
	658-1	BLUE WATER LINE - IN (C/W(1) 656-1 CLAMP) (LOCATED AT QUICK CONNECT POWER BLOCK ASSEMBLY)
9		POWER CABLE ASSEMBLY
	659-10	10' SERVICE (ACTUAL LENGTH - 9.5')
	659-12	12' SERVICE (ACTUAL LENGTH - 11.5')
	659-15	15' SERVICE (ACTUAL LENGTH - 14.5')
10	320	HANDLE - FRONT
10A	320-2	HANDLE LOCK NUT (FOR FRONT)
11	211-5	SWITCH ASSEMBLY
	211-5-8	SWITCH WITH EXTENDED LEVER
12		CONTROL WIRE
	662-10	10' SERVICE
	662-15	12' SERVICE
	662-15	15' SERVICE



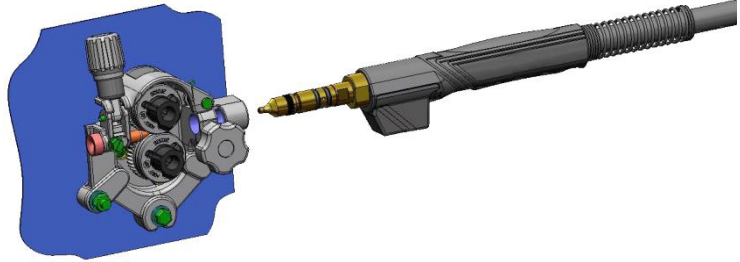
PART #	DESCRIPTION
<b>13</b> 412-8	SWITCH LEAD CONNECTOR
<b>15</b> 642-XX	OUTER JACKET ASSEMBLY
<b>15A</b> 320-5	JACKET BUSHING
<b>15B</b> 320-4	REAR HANDLE CAP
<b>15C</b> 663-1-XX	OUTER JACKET
<b>15D</b> 663-1	STRAIN RELIEF
<b>16</b> 664-400	POWER PIN BLOCK
<b>17</b> 214	TWECO®
214-2	LINCOLN®
214-6-116	MILLER®
214-12	TWECO #5
214-13	PANASONIC®
414-1	O-RING FOR TWECO
414-2	LINER SET SCREW
414-11-2	O-RING FOR MILLER POWER PIN
214-6-9	MILLER (FOR ALUMINUM)
<b>18</b>	<b>CONVENTIONAL LINERS</b>
415-23-15	FOR .023" (0.6 mm) WIRE - 15' (5 m)
415-30-15	FOR .030" (0.8 mm) WIRE - 15' (5 m)
415-35-10	FOR .035" - .045" (0.9 mm - 1.2 mm) WIRE - 10' (3 m)
415-35-15	FOR .035" - .045" (0.9 mm - 1.2 mm) WIRE - 15' (5 m)
415-35-25	FOR .035" - .045" (0.9 mm - 1.2 mm) WIRE - 25' (8 m)
415-35-2	FOR .035" (0.9 mm) ALUMINUM WIRE - 15' (5 m)
415-116-10	FOR .045" - 1/16" (1.2 mm - 1.6 mm) WIRE - 10' (3 m)
415-116-15	FOR .045" - 1/16" (1.2 mm - 1.6 mm) WIRE - 15' (5 m)
415-116-25	FOR .045" - 1/16" (1.2 mm - 1.6 mm) WIRE - 25' (8 m)
415-116-2	FOR 3/64" - 1/16" (1.2 mm - 1.6 mm) ALUM. WIRE - 15' (5 m)
415-332-15	FOR 5/64" - 3/32" (2.0 mm - 2.4 mm) WIRE - 15' (5 m) FLAT WOUND
415-332-153	FOR 5/64" - 3/32" (2.0 mm - 2.4 mm) WIRE - 15' (5 m) ROUND WOUND
415-332-251	FOR 5/64" - 3/32" (2.0 mm - 2.4 mm) WIRE - 15' (5 m) ROUND WOUND
415-332-25	FOR 5/64" - 3/32" (2.0 mm - 2.4 mm) WIRE - 25' (8 m) FLAT WOUND
415-564-15	FOR ALL 5/64" (2.0 mm) WIRE & 1/16" (1.6 mm) FLUX CORE WIRE
415-332-15	FOR .078" - 3/32" (2.24 mm) WIRE - 15' (5 m) FLAT WOUND
415-1M	LINER O-RING
415-25	JUMP LINER
415-45-01	FOR .035" - 3/64" WIRE - 6'
415-45-02	FOR .035" - 3/64" WIRE - 10'
415-45-03	FOR .035" - 3/64" WIRE - 15'
415-116-21	FOR 3/64" - 1/16" WIRE - 6'
415-116-22	FOR 3/64" - 1/16" WIRE - 10'
415-116-23	FOR 3/64" - 1/16" WIRE - 15'

PART #	DESCRIPTION
<b>19</b> 416-15	EURO HOUSING BLANK (C/W SCREWS)
416-5	CONTROL HOUSING (C/W SCREWS)
411-3M	MOUNTING SCREWS (METRIC)
<b>20</b>	<b>FEEDER ADAPTOR REQUIREMENTS (SOLD SEPARATELY)</b>
417	QUICK CONNECT BLOCK ASSEMBLY TWECO® #4
417-50	QUICK CONNECT BLOCK ASSEMBLY EURO
417-60	QUICK CONNECT BLOCK ASSEMBLY TWECO #5
<b>21</b>	FEEDER ADAPTORS (TO BE USED WITH QUICK CONNECT BLOCK)
<b>22</b>	CONTROL PLUGS (C/W PLUGS LEAD & FEMALE CONNECTORS)
	<b>OPTIONAL ACCESSORIES</b>
<b>23</b> 422	GUN HANGER
<b>24</b> 421	HEAT SHIELD
<b>25</b> 610	HANDLE (REAR W/STRAIN RELIEF)
	<b>REPLACEMENT CABLE BUNDLES</b>
661-10	10 FT. CABLE BUNDLE
661-12	12 FT. CABLE BUNDLE
661-15	15 FT. CABLE BUNDLE
<b>26</b> 413-5	OETIKER CLAMP - 11.3 mm
<b>27</b> 357-2	OETIKER CLAMP - 8.7 mm
<b>28</b> 656-1	OETIKER CLAMP - 9.5 mm
<b>30</b> 412-1	SWITCH LEAD CONNECTOR

# INSTALLING MIG GUN INTO A FEEDER

## For most power pins

1. Insert power pin to shoulder and secure.
2. Insert control plug to control housing of gun.
3. Insert control plug into feeder.
4. Feed welding wire into power pin by hand and tighten drive rolls.
5. If using a water-cooled gun, securely clamp blue hose on rear housing to water-out on water cooler and red hose on rear housing to water-in on water cooler.



Note: On Lincoln® feeders it is necessary to connect the gas hose to the barbed fitting on the power pin.

## GENERAL SAFETY

Before installation or operation of T-Gun MIG Guns, please read the safety precautions listed below.

1. Always wear a properly fitted welding helmet with the proper grade of filter plate and suitable welding gloves.
2. All exposed skin should be covered with flame resistant, protective clothing. **DO NOT WEAR CLOTHING MADE FROM FLAMMABLE SYNTHETIC FIBERS.**
3. Protective screens or barriers should be used to protect others from spatter, flash and glare while welding.
4. Prevent fires by ensuring that hot slag or sparks do not contact combustible solids, liquids or gases.
5. Ensure that operator's head is not too close to the arc and that adequate ventilation is available.
6. Constant repetitive motion may lead to cumulative trauma disorders.
7. Do not touch live electrical parts. The following should be checked to prevent electrical shock:
  - Equipment is adequate for the job, properly grounded and installed according to code.
  - Faulty or damaged equipment is repaired or replaced.
  - Proper operator maintenance is performed to prevent excess spatter accumulation in the nozzle, or the contact tip or other areas of the gun.
  - Electrical insulating components are in place and not damaged. Repair or replace if necessary.
  - Operator and his surroundings are not wet.
  - Cables are not wrapped around operator's body.
  - Equipment is off when not in use.
8. CSA Standard W117.2 CODE FOR SAFETY IN WELDING AND CUTTING obtainable from the Canadian Standards Association, Standards Sales, 178 Rexdale Boulevard, Rexdale, Ontario, Canada M9W 1R3.
9. ANSI Standard Z49.1 CODE FOR SAFETY IN WELDING AND CUTTING obtainable from the American National Standards Institute, 1430 Broadway, New York, NY 10018.

## CALIFORNIA PROPOSITION 65 WARNING

This product, when used for welding or cutting, produces fumes or gases which contain chemicals known to the State of California to cause birth defects and, in some cases, cancer.

This product contains chemicals, including lead, known to the State of California to cause cancer, and birth defects or other reproductive harm. *Wash hands after use.*

(California Health & Safety Code Section 25249.5 at seq.)



## FOR ADDITIONAL TECHNICAL DATA:

For additional Technical Data, including installation, maintenance, neck dimensions, options, accessories and troubleshooting, please visit the Technical Support section of the Bernard website at [Tregaskiss.com.com](http://Tregaskiss.com.com).

### For Customer Support:

U.S.A. 800-946-2281  
International 708-946-2281  
[Tregaskiss.com](http://Tregaskiss.com)



<b>SUPERTECH SERVICES PVT. LTD.</b>	Plot :- A253, Road 30B, Wagle Industrial Estate, Thane (West), Maharashtra, India.	Tel :- +91 91360 97134 / +91 91360 97135 Email :- <a href="mailto:ssl@supertechservices.in">ssl@supertechservices.in</a>	For more information visit us at : <a href="http://www.supertechservices.in">www.supertechservices.in</a>
-------------------------------------	--	---	--