

Weldcraft™ A-125 Series

Formerly WP-9 Series

Hand-Held Air-Cooled
TIG Welding Torches



Quick Specs

Models

| | |
|------------------|---------------------------|
| A-125 | A-125 Flex Redhead™ |
| A-125 Valve | A-125 Flex Valve Redhead™ |
| A-125 Flex | A-125 Pencil |
| A-125 Flex Valve | |

Applications

Maintenance and repair
Home/hobby
Metal art/sculpture
Motorsports
Fabrication

Rated Output

DC: 125 A, AC: 100 A

Duty Cycle 60%

Electrode Range

.020–1/8 in. (0.5–3.2 mm)

A-125 Series TIG torches

Formerly known as the WP-9 Series, the A-125 Series torches are designed for optimal control while welding thin-gauge materials, especially in hard-to-reach places. This series offers a variety of configurations suited to diverse welding applications.

The lightweight body reduces fatigue and downtime, and increases operator comfort.

Perfected control. The gas valve in the A-125 Valve offers improved shielding gas control.

Flexibility. Using the A-125 Flex, the flexible neck easily adjusts to any angle for improved torch control.

The pencil-style model without a back cap allows for superior access to confined areas (A-125 Pencil).

Combine the flexible neck and gas valve for welding limited-access joints using power sources without gas solenoids (A-125 Flex Valve).

For maximum versatility on multiple welding applications, without adding expenses, use the A-125 Flex Redhead and A-125 Flex Valve Redhead.

Note: Torches delivered may vary slightly from images shown.



A-125
(WP-9)



A-125 Valve
(WP-9V)

Additional torch models



A-125 Flex
(WP-9F)



A-125 Flex Valve
(WP-9FV)



A-125 Flex Redhead
(WP-R9F)



A-125 Flex Valve Redhead
(WP-R9FV)



A-125 Pencil
(WP-9P)



Miller Electric Mfg. Co.
An ITW Welding Company
1635 West Spencer Street
P.O. Box 1079
Appleton, WI 54912-1079 USA

Equipment Sales US and Canada
Phone: 866-931-9730
FAX: 800-637-2315
International Phone: 920-735-4554
International FAX: 920-735-4125

MillerWelds.com
f t y i n



Torch Packages

| Models | | 1-Piece Power Cable Standard Rubber | | 2-Piece Power Cable Rubber | |
|-----------|------------------|--|----------------|-------------------------------|----------------|
| Old Model | New Name | 12.5 ft. (3.8 m) | 25 ft. (7.6 m) | 12.5 ft. (3.8 m) | 25 ft. (7.6 m) |
| WP-9 | A-125 | WP-9-12-R | WP-9-25-R | WP-9-12-2 | WP-9-25-2 |
| WP-9V | A-125 Valve | WP-9V-12-R | WP-9V-25-R | WP-9V-12-2 | WP-9V-25-2 |
| WP-9F | A-125 Flex | WP-9F-12-R | WP-9F-25-R | — | — |
| WP-9FV | A-125 Flex Valve | WP-9FV-12-R | WP-9FV-25-R | WP-9FV-12-2 | WP-9FV-25-2 |
| WP-9P | A-125 Pencil | WP-9P-12-R | WP-9P-25-R | — | — |

V = Valve F = Flex FV = Flex Valve P = Pencil

Torch packages include torch body, handle, power cable, and long back cap (excluding the A-125 Pencil model).

Connectors

1-piece power cable connectors



194722
50 mm Dinse-style
gas thru for one-piece
air-cooled torch.



195378
50 mm Dinse-style
for one-piece
air-cooled torch.



105257
Power cable adapter
for one-piece
air-cooled torch.



273483
25 mm (small)
Dinse-style gas
thru one-piece
air-cooled torch.

2-piece power cable connector

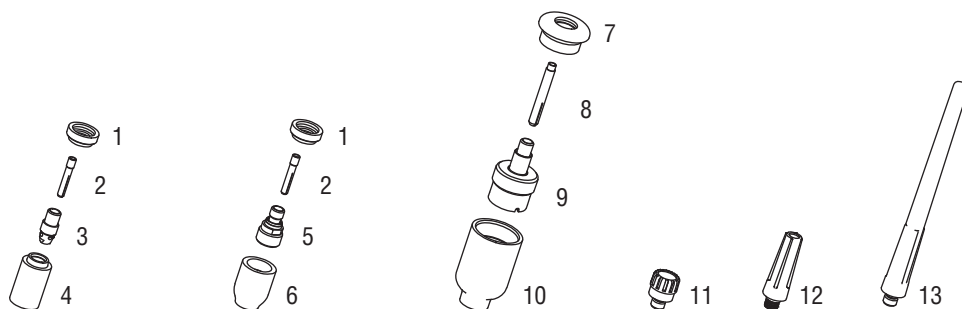


129527
50 mm Dinse-style
for two-piece cable
air-cooled torch.

| Machines | Connection Type | 1-Piece Power Cable Connectors | 2-Piece Power Cable Connectors |
|--|------------------------------------|--------------------------------|--------------------------------|
| TIG Machines | | | |
| Syncrowave® 200/210 | 50 mm Dinse-style gas thru | 194722 | 129527* |
| Syncrowave® 250 DX/350 DX (Dinse) | 50 mm Dinse-style | 195378 | 129527 |
| Syncrowave® 250 DX/350 DX (stud) | 1/2 in. stud | 105257 | N/A |
| Maxstar® 150 STL/STH | 25 mm (small) Dinse-style gas thru | 273483 | 127836* |
| Dynasty® 200/210/280/350, Maxstar® 200/210/280/350 | 50 mm Dinse-style | 195378 | 129527 |
| Multiprocess Machines | | | |
| Multimatic™ 200 | 25 mm (small) Dinse-style gas thru | 273483 | 127836* |
| Dimension™ 302/452/NT 450/652 | 1/2 in. stud | 105257 | N/A |
| PipeWorx | 1/2 in. stud | 105257 | N/A |
| XMT® 304/350 | 50 mm Dinse-style | 195378 | 129527 |
| XMT® 450 | 1/2 in. stud | 105257 | N/A |
| Engine-Driven Machines | | | |
| Most Big Blue®, Trailblazer®, Bobcat™, Blue Star® and Wildcat® models | 1/2 in. stud | 105257 | N/A |
| Big Blue® 450 Duo CST | 50 mm Dinse-style | 195378 | 129527 |
| General Reference | | | |
| | 25 mm (small) Dinse-style gas thru | 273483 | N/A |
| | 50 mm Dinse-style | 195378 | 129527 |
| | 50 mm Dinse-style gas thru | 194722 | N/A |
| | 1/2 in. stud | 105257 | N/A |
| Other Adapter | | | |
| | Stud to dinse-style adapter | 232728 | |

*2-piece power cable connector is not gas thru.

Consumables (Refer to Owner's Manual for additional replacement parts.)



Non-Gas Lens

| Non Gas Torch | | | | | | | | | | |
|-----------------------------|------------|---------|------------|---------|------------|---------|------------|----------|-----------|--|
| Electrode Size — inch (mm) | .020 (0.5) | | .040 (1.0) | | 1/16 (1.6) | | 3/32 (2.4) | | 1/8 (3.2) | |
| 1 Insulator (required) | 598882 | | 598882 | | 598882 | | 598882 | | 598882 | |
| 2 Collet | 13N20 | | 13N21 | | 13N22 | | 13N23 | | 13N24 | |
| 3 Collet Body | 13N25 | | 13N26 | | 13N27 | | 13N28 | | 13N29 | |
| Nozzle Size — size # (inch) | 3 (3/16) | 4 (1/4) | 5 (5/16) | 6 (3/8) | 7 (7/16) | 8 (1/2) | 10 (5/8) | 12 (3/4) | Short | |
| 4 Alumina | — | 13N08 | 13N09 | 13N10 | 13N11 | 13N12 | 13N13 | — | — | |
| * Lava | — | 13N14 | 13N15 | 13N16 | 13N17 | 13N18 | 13N19 | — | — | |
| * Long Lava | 796F70 | 796F71 | 796F72 | 796F73 | — | — | — | — | — | |
| * X-Long Lava | 796F74 | 796F75 | 796F76 | 796F77 | — | — | — | — | — | |

Gas Lens

| | | | | | | | | | | |
|-----------------------------|------------|---------|------------|---------|------------|---------|------------|----------|-----------|--|
| Electrode Size — inch (mm) | .020 (0.5) | | .040 (1.0) | | 1/16 (1.6) | | 3/32 (2.4) | | 1/8 (3.2) | |
| 1 Insulator (required) | 598882 | | 598882 | | 598882 | | 598882 | | 598882 | |
| 2 Collet | 13N20 | | 13N21 | | 13N22 | | 13N23 | | 13N24 | |
| 5 Gas Lens | 45V41 | | 45V42 | | 45V43 | | 45V44 | | 45V45 | |
| Nozzle Size — size # (inch) | 3 (3/16) | 4 (1/4) | 5 (5/16) | 6 (3/8) | 7 (7/16) | 8 (1/2) | 10 (5/8) | 12 (3/4) | Short | |
| 6 Alumina Gas Lens | — | 53N58 | 53N59 | 53N60 | 53N61 | 53N61S | — | — | — | |

Large Diameter Gas Lens

| | | | | | | | | | | |
|-----------------------------|------------|---------|------------|----------|------------|----------|------------|----------|-----------|--|
| Electrode Size — inch (mm) | .020 (0.5) | | .040 (1.0) | | 1/16 (1.6) | | 3/32 (2.4) | | 1/8 (3.2) | |
| 7 Insulator (required) | 54N63-20 | | 54N63-20 | | 54N63-20 | | 54N63-20 | | 54N63-20 | |
| 8 Collet | 13N20L | | 13N21L | | 13N22L | | 13N23L | | 13N24L | |
| 9 Large Diameter Gas Lens | 45V0204S | | 45V0204S | | 45V116S | | 45V64S | | 995795S | |
| Nozzle Size — size # (inch) | 3 (3/16) | 4 (1/4) | 5 (5/16) | 6 (3/8) | 7 (7/16) | 8 (1/2) | 10 (5/8) | 12 (3/4) | Short | |
| 10 Large Dia. Gas Lens | — | — | — | 57N75 | — | 57N74 | 53N88 | 53N87 | 53N89 | |
| * Large Dia. Gas Lens-L | — | — | — | 57N75L | — | 57N74L | 53N88L | 53N87L | — | |
| * Large Dia. Gas Lens-XL | — | — | — | 57N75XL | — | 57N74XL | 53N88XL | 53N87XL | — | |
| * Large Dia. Gas Lens-XXL | — | — | — | 57N75XXL | — | 57N74XXL | 53N88XXL | 53N87XXL | — | |

Back Caps

| | | |
|----------------|-----------------|---------------|
| 11 Short 41V33 | 12 Medium 41V35 | 13 Long 41V24 |
|----------------|-----------------|---------------|

*Not shown.

Tungsten

Tungsten for the most demanding TIG welding applications!

Available in four types and industry-standard diameters, our line of Weldcraft™ tungsten electrodes has undergone rigorous testing to ensure the highest quality and durability. Color-coded packages include ten 7-inch (175 mm) tungsten electrodes.

Note: Refer to manufacturer SDS sheets for proper preparation and safety. Use proper ventilation/capture during preparation. Refer to manufacturer warning regarding ventilation.



| Type | Diameter in. (mm) | Part # | Type | Diameter in. (mm) | Part # |
|--|-------------------|-----------------|---|-------------------|----------------|
| 2% Ceriated (EWCe-2) | | | Pure (EWP) | | |
| Performs well in DC welding and arc starting at low-current settings, and offers excellent performance in AC processes. | 0.040 (1.0) | WC040X7 | Forms a clean, balled end when heated and provides good arc stability for AC welding with a balanced or unbalanced squarewave or sine wave. | 0.040 (1.0) | — |
| | 1/16 (1.6) | WC116X7 | | 1/16 (1.6) | WP116X7 |
| | 3/32 (2.4) | WC332X7 | | 3/32 (2.4) | WP332X7 |
| | 1/8 (3.2) | WC018X7 | | 1/8 (3.2) | WP018X7 |
| | 5/32 (4.0) | WC532X7 | | 5/32 (4.0) | — |
| 2% Lanthanated (EWLa-2) | | | Rare Earth (EWG) | | |
| Provides excellent arc starting, arc stability and re-ignition, and less tip erosion in AC or DC welding. Can substitute for 2% Thoriated. | 0.040 (1.0) | WL2040X7 | Combines the best of all alloying elements, and provides excellent arc stability in AC or DC welding. | 0.040 (1.0) | — |
| | 1/16 (1.6) | WL2116X7 | | 1/16 (1.6) | WG116X7 |
| | 3/32 (2.4) | WL2332X7 | | 3/32 (2.4) | WG332X7 |
| | 1/8 (3.2) | WL2018X7 | | 1/8 (3.2) | WG018X7 |
| | 5/32 (4.0) | WL2532X7 | | 5/32 (4.0) | — |

Replacement Parts

Torch Bodies

| | |
|---------------------------|----------------|
| A-125 | WP-9 |
| A-125 Valve | WP-9V |
| A-125 Flex | WP-9F |
| A-125 Flex Valve | WP-9FV |
| A-125 Redhead™ Flex | WP-R9F |
| A-125 Redhead™ Flex Valve | WP-R9FV |

Handles

| | |
|----------------------------|----------------|
| A-125 (ribbed) | H-100R |
| A-125 Valve (knurled) | H-100 |
| A-125 Flex (ribbed) | 105Z55R |
| A-125 Flex Valve (knurled) | 105Z55 |

Flex Head Only

| | |
|--------------------------------|------------|
| A-125 Flex/Flex Valve | 9F |
| A-125 Redhead™ Flex/Flex Valve | R9F |

Valve Knob

| | |
|------------------|-------------|
| All valve models | VS-2 |
|------------------|-------------|

Power Cables and Hoses

| | 12.5 ft. (3.8 m) | 25 ft. (7.6 m) |
|----------------|-------------------------|-----------------------|
| Rubber | 57Y01R | 57Y03R |
| Mono Flex™ | 57Y01MF | 57Y03MF |
| 2-Piece Rubber | 57Y01-2 | 57Y03-2 |

Genuine Miller® Accessories



Accessory Kit AK1C
Includes one long back cap, one of each size (#4, #5, #6) alumina nozzle, and one of each size (.040, 1/16 inch) of the following: collet, collet body, and 7-inch 2% ceriated tungsten electrode.



Accessory Kit AK-150MFC
Allows welding operators to customize their standard A-150 (WP-17) or A-125 (WP-9) TIG torch for their specific application. Kit converts into 28 different torch styles while using the A-150 and A-125 existing cable. Features collets, collet bodies, nozzles, torch heads, handle and more.

Extension Kit

EK-2-25-R 25 ft. (7.6 m), rubber



Cable Covers

WC-3-10
10 ft. (3 m)
WC-3-22
22 ft. (6.7 m)
WC-3-48
48 ft. (14.6 m)



Wireless Remote Foot Control 300429
For remote current and contactor control. Receiver plugs directly into the 14-pin receptacle of Miller machine. 90-foot (27.4 m) operating range.



Wireless Remote Hand Control 300430
For remote current and contactor control. Receiver plugs directly into the 14-pin receptacle of Miller machine. 300-foot (91.4 m) operating range.



RCC-14 Remote Contactor and Current Control 151086
East/west rotary-motion fingertip control attaches to TIG torch using two hook-and-loop fasteners. Includes 26.5-foot (8 m) cord with 14-pin plug.



RCCS-14 Remote Contactor and Current Control 043688
North/south rotary-motion fingertip control attaches to TIG torch using two hook-and-loop fasteners. Includes 26.5-foot (8 m) cord with 14-pin plug.

Distributed by:

SUPERTECH SERVICES PVT. LTD. Plot :- A253, Road 30B, Wagle Industrial Estate, Thane (West), Maharashtra, India. Tel :- +91 91360 97134 / +91 91360 97135 Email :- ssl@supertechservices.in For more information visit us at : www.supertechservices.in



Miller

The Power of Blue®