

# Weldcraft™ A-150 Series

## Formerly WP-17 Series

**Hand-Held Air-Cooled  
TIG Welding Torches**



### Quick Specs

#### Models

A-150	A-150 Flex Redhead™
A-150 Valve	A-150 Flex Valve Redhead™
A-150 Flex	A-150 Positive Stop Handle
A-150 Flex Valve	A-150 Valve Positive Stop Handle

#### Applications

Fabrication  
Maintenance and repair  
Aerospace  
Food and beverage industry  
Metal art  
Petro/chemical  
Shipboard installation/repair

#### Rated Output

DC: 150 A, AC: 115 A

**Duty Cycle** 60%

#### Electrode Range

.020–1/8 in. (0.5–3.2 mm)

### A-150 Series TIG torches

Formerly known as the WP-17 Series, the A-150 Series is comprised of an assortment of versatile and innovative air-cooled torches designed for maximum comfort in a variety of applications. The A-150 Series torches are a cost-effective alternative to complex water-cooled systems.

**Diamond Grip™ head design** (A-150 and A-150 Valve) has ergonomic contact points for thumb and fingers. Provides a more comfortable grip and reduces operator fatigue.

**Improve control and comfort** with the A-150 Flex and the flexible neck that allows access into hard-to-reach areas.

**Maximum versatility.** Utilize the Redhead Series torches in a variety of welding applications without adding expenses.

**Ribbed handle and torch design** provide cool operation and maximum operator comfort while reducing downtime caused by operator fatigue.

**Utilize existing parts.** Replacement parts are easy to find. The A-150 Series uses Weldcraft 10N series consumables.

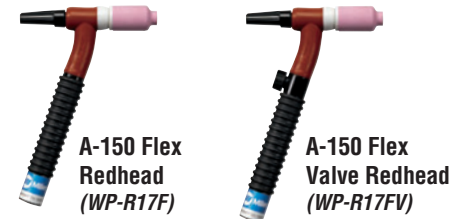
**Available with 12.5- or 25-foot, single- or heavy-duty two-piece cable assembly** determined by the compatibility of the power source. Heavy-duty cable assembly allows use of a larger conductor for the power cable which simplifies repair and replacement making it ideal for field applications.

### Additional torch models



A-150 Flex  
(WP-17F)

A-150 Flex Valve  
(WP-17FV)



A-150 Flex Redhead  
(WP-R17F)

A-150 Flex Valve Redhead  
(WP-R17FV)



A-150 Valve  
(WP-17V)



A-150 PSH  
(WP-17-Positive Stop Handle)

A-150 Valve PSH  
(WP-17V-Positive Stop Handle)

*Note: Torches delivered may vary slightly from images shown.*



**Miller Electric Mfg. Co.**  
An ITW Welding Company  
1635 West Spencer Street  
P.O. Box 1079  
Appleton, WI 54912-1079 USA

**Equipment Sales US and Canada**  
Phone: 866-931-9730  
FAX: 800-637-2315  
International Phone: 920-735-4554  
International FAX: 920-735-4125

**MillerWelds.com**



## Torch Packages

Models		1-Piece Power Cable Standard Rubber		1-Piece Power Cable Mono-Flex™		2-Piece Power Cable Rubber	
Old Model	New Name	12.5 ft. (3.8 m)	25 ft. (7.6 m)	12.5 ft. (3.8 m)	25 ft. (7.6 m)	12.5 ft. (3.8 m)	25 ft. (7.6 m)
WP-17	A-150	WP-17-12-R	WP-17-25-R	WP-17-12-MF	WP-17-25-MF	WP-17-12-2	WP-17-25-2
WP-17V	A-150 Valve	WP-17V-12-R	WP-17V-25-R	WP-17V-12-MF	WP-17V-25-MF	WP-17V-12-2	WP-17V-25-2
WP-17F	A-150 Flex	WP-17F-12-R	WP-17F-25-R	—	—	WP-17F-12-2	WP-17F-25-2
WP-17FV	A-150 Flex Valve	WP-17FV-12-R	WP-17FV-25-R	—	—	WP-17FV-12-2	WP-17FV-25-2
WP-R17FV	A-150 Flex Valve Redhead™	WP-R17FV-12-R	WP-R17FV-25-R	—	—	—	—
WP-17-PSH	A-150 PSH	—	WP-17-25-R-PSH	—	—	WP-17-12-2-PSH	WP-17-25-2-PSH
WP-17V-PSH	A-150 Valve PSH	WP-17V-12-R-PSH	WP-17V-25-R-PSH	—	—	—	WP-17V-25-2-PSH

**V** = Valve **F** = Flex **FV** = Flex Valve **PSH** = Positive Stop Handle (threaded handle)

**Torch packages include torch body, handle, power cable and long back cap.**

## Connectors

### 1-piece power cable connectors



**194722**  
50 mm Dinse-style  
gas thru for one-piece  
air-cooled torch.



**195378**  
50 mm Dinse-style  
for one-piece  
air-cooled torch.



**105257**  
Power cable adapter  
for one-piece  
air-cooled torch.



**273483**  
25 mm (small)  
Dinse-style gas  
thru one-piece  
air-cooled torch.

### 2-piece power cable connector

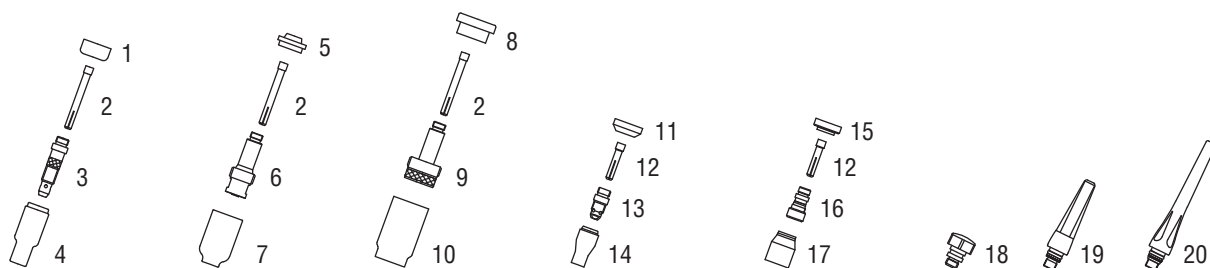


**129527**  
50 mm Dinse-style  
for two-piece cable  
air-cooled torch.

Machines	Connection Type	1-Piece Power Cable Connectors	2-Piece Power Cable Connectors
<b>TIG Machines</b>			
Syncrowave® 200/210	50 mm Dinse-style gas thru	<b>194722</b>	<b>129527*</b>
Syncrowave® 250 DX/350 DX (Dinse)	50 mm Dinse-style	<b>195378</b>	<b>129527</b>
Syncrowave® 250 DX/350 DX (stud)	1/2 in. stud	<b>105257</b>	<b>N/A</b>
Maxstar® 150 STL/STH	25 mm (small) Dinse-style gas thru	<b>273483</b>	<b>127836*</b>
Dynasty® 200/210/280/350, Maxstar® 200/210/280/350	50 mm Dinse-style	<b>195378</b>	<b>129527</b>
<b>Multiprocess Machines</b>			
Multimatic™ 200	25 mm (small) Dinse-style gas thru	<b>273483</b>	<b>127836*</b>
Dimension™ 302/452/NT 450/652	1/2 in. stud	<b>105257</b>	<b>N/A</b>
PipeWorx	1/2 in. stud	<b>105257</b>	<b>N/A</b>
XMT® 304/350	50 mm Dinse-style	<b>195378</b>	<b>129527</b>
XMT® 450	1/2 in. stud	<b>105257</b>	<b>N/A</b>
<b>Engine-Driven Machines</b>			
Most Big Blue®, Trailblazer®, Bobcat™, Blue Star® and Wildcat® models	1/2 in. stud	<b>105257</b>	<b>N/A</b>
Big Blue® 450 Duo CST	50 mm Dinse-style	<b>195378</b>	<b>129527</b>
<b>General Reference</b>			
	25 mm (small) Dinse-style gas thru	<b>273483</b>	<b>N/A</b>
	50 mm Dinse-style	<b>195378</b>	<b>129527</b>
	50 mm Dinse-style gas thru	<b>194722</b>	<b>N/A</b>
	1/2 in. stud	<b>105257</b>	<b>N/A</b>
<b>Other Adapter</b>			
	Stud to dinse-style adapter	<b>232728</b>	

\*2-piece power cable connector is not gas thru.

## Consumables (Refer to Owner's Manual for additional replacement parts.)



### Non-Gas Lens

Electrode Size — inch (mm)	.020 (0.5)		.040 (1.0)		1/16 (1.6)		3/32 (2.4)		1/8 (3.2)	
1 Insulator (required)	18CG		18CG		18CG		18CG		18CG	
2 Collet	10N21		10N22		10N23		10N24		10N25	
3 Collet Body	10N29		10N30		10N31		10N32		10N28	
Nozzle Size — size # (inch)	4 (1/4)	5 (5/16)	6 (3/8)	7 (7/16)	8 (1/2)	10 (5/8)	12 (3/4)	Short		
4 Alumina	10N50	10N49	10N48	10N47	10N46	10N45	10N44	—		
* Long Alumina	—	10N49L	10N48L	10N47L	—	—	—	—		
* Lava	105Z43	105Z42	105Z44	105Z45	08N78	08N79	08N80	—		
* Long Lava	12N03	105Z60	12N02	105Z61	—	—	—	—		

### Gas Lens

Electrode Size — inch (mm)	.020 (0.5)		.040 (1.0)		1/16 (1.6)		3/32 (2.4)		1/8 (3.2)							
5 Insulator (required)	54N01		54N01		54N01		54N01		54N01							
2 Collet	10N21		10N22		10N23		10N24		10N25							
6 Gas Lens	45V29		45V24		45V25		45V26		45V27							
Nozzle Size — size # (inch)	4 (1/4)		5 (5/16)		6 (3/8)		7 (7/16)		8 (1/2)		10 (5/8)		12 (3/4)		Short	
7 Alumina Gas Lens	54N18		54N17		54N16		54N15		54N14		—		—		54N19	
* Long Gas Lens	—		54N17L		54N16L		54N15L		—		—		—		—	

### Large Diameter Gas Lens

Electrode Size — inch (mm)	.020 (0.5)		.040 (1.0)	1/16 (1.6)		3/32 (2.4)		1/8 (3.2)	
8 Insulator (required)	54N63		54N63	54N63		54N63		54N63	
2 Collet	10N21		10N22	10N23		10N24		10N25	
9 Large Diameter Gas Lens	45V0204		45V0204	45V116		45V64		995795	
Nozzle Size — size # (inch)	4 (1/4)	5 (5/16)	6 (3/8)	7 (7/16)	8 (1/2)	10 (5/8)	12 (3/4)	Short	
10 Large Dia. Gas Lens	—	—	57N75	—	57N74	53N88	53N87	53N89	
* Large Dia. Gas Lens-L	—	—	57N75L	—	57N74L	53N88L	53N87L	—	
* Large Dia. Gas Lens-XL	—	—	57N75XL	—	57N74XL	53N88XL	53N87XL	—	
* Large Dia. Gas Lens-XXL	—	—	57N75XXL	—	57N74XXL	53N88XXL	53N87XXL	—	

### Stubby Non-Gas Lens

Electrode Size — inch (mm)	.020 (0.5)	.040 (1.0)	1/16 (1.6)	3/32 (2.4)	1/8 (3.2)
11 Insulator (required)	18CG20	18CG20	18CG20	18CG20	18CG20
12 Stubby Collet	—	10N22S	10N23S	10N24S	10N25S
13 Stubby Collet Body	17CB20	17CB20	17CB20	17CB20	17CB20

Nozzle Size — size # (inch)	4 (1/4)	5 (5/16)	6 (3/8)	7 (7/16)	8 (1/2)	10 (5/8)	12 (3/4)	Short
14 Stubby Alumina	13N08	13N09	13N10	13N11	13N12	13N13	—	—

### Stubby Gas Lens

Electrode Size — inch (mm)	.020 (0.5)	.040 (1.0)	1/16 (1.6)	3/32 (2.4)	1/8 (3.2)
15 Insulator (required)	17GLG20	17GLG20	17GLG20	17GLG20	17GLG20
12 Stubby Collet	—	10N22S	10N23S	10N24S	10N25S
16 Stubby Gas Lens	—	17GL040	17GL116	17GL332	17GL18

Nozzle Size — size # (inch)	4 (1/4)	5 (5/16)	6 (3/8)	7 (7/16)	8 (1/2)	10 (5/8)	12 (3/4)	Short
17 Alumina Gas Lens	53N58	53N59	53N60	53N61	53N61S	—	—	—

### Back Caps

18 Short 57Y04	19 Medium 300M	20 Long 57Y02
----------------	----------------	---------------

\*Not shown.

# Tungsten

## Tungsten for the most demanding TIG welding applications!

Available in four types and industry-standard diameters, our line of Weldcraft™ tungsten electrodes has undergone rigorous testing to ensure the highest quality and durability. Color-coded packages include ten 7-inch (175 mm) tungsten electrodes.

*Note: Refer to manufacturer SDS sheets for proper preparation and safety. Use proper ventilation/capture during preparation. Refer to manufacturer warning regarding ventilation.*



Type	Diameter in. (mm)	Part #	Type	Diameter in. (mm)	Part #
<b>2% Ceriated (EWCe-2)</b>			<b>Pure (EWP)</b>		
Performs well in DC welding and arc starting at low-current settings, and offers excellent performance in AC processes.	0.040 (1.0)	<b>WC040X7</b>	Forms a clean, balled end when heated and provides good arc stability for AC welding with a balanced or unbalanced squarewave or sine wave.	0.040 (1.0)	—
	1/16 (1.6)	<b>WC116X7</b>		1/16 (1.6)	<b>WP116X7</b>
	3/32 (2.4)	<b>WC332X7</b>		3/32 (2.4)	<b>WP332X7</b>
	1/8 (3.2)	<b>WC018X7</b>		1/8 (3.2)	<b>WP018X7</b>
	5/32 (4.0)	<b>WC532X7</b>		5/32 (4.0)	—
<b>2% Lanthanated (EWLa-2)</b>			<b>Rare Earth (EWG)</b>		
Provides excellent arc starting, arc stability and re-ignition, and less tip erosion in AC or DC welding. Can substitute for 2% Thoriated.	0.040 (1.0)	<b>WL2040X7</b>	Combines the best of all alloying elements, and provides excellent arc stability in AC or DC welding.	0.040 (1.0)	—
	1/16 (1.6)	<b>WL2116X7</b>		1/16 (1.6)	<b>WG116X7</b>
	3/32 (2.4)	<b>WL2332X7</b>		3/32 (2.4)	<b>WG332X7</b>
	1/8 (3.2)	<b>WL2018X7</b>		1/8 (3.2)	<b>WG018X7</b>
	5/32 (4.0)	<b>WL2532X7</b>		5/32 (4.0)	—

## Replacement Parts

Torch Bodies		
A-150		<b>WP-17</b>
A-150 Valve		<b>WP-17V</b>
A-150 Flex		<b>WP-17F</b>
A-150 Flex Valve		<b>WP-17FV</b>
A-150 Redhead™ Flex		<b>WP-R17F</b>
A-150 Redhead™ Flex Valve		<b>WP-R17FV</b>
A-150 PSH		<b>WP-17-PSH</b>
A-150 Valve PSH		<b>WP-17V-PSH</b>
Handles		
A-150 (ribbed)		<b>H-100R</b>
A-150 Valve (knurled)		<b>H-100</b>
A-150 Flex (ribbed)		<b>105Z55R</b>
A-150 Flex Valve (knurled)		<b>105Z55</b>
Valve Knob		
All valve models		<b>VS-2</b>
Flex Head Only		
A-150 Flex/Flex Valve		<b>17F</b>
A-150 Redhead™ Flex/Flex Valve		<b>R17F</b>
Power Cables		
	<b>12.5 ft. (3.8 m)</b>	<b>25 ft. (7.6 m)</b>
1-Piece Rubber	<b>57Y01R</b>	<b>57Y03R</b>
Mono Flex™	<b>57Y01MF</b>	<b>57Y03MF</b>
2-Piece Rubber	<b>57Y01-2</b>	<b>57Y03-2</b>

## Genuine Miller® Accessories



**Accessory Kit AK2C**  
Includes one short back cap, one of each size (#4, #5, #6) alumina nozzle, and one of each size (.040, 1/16, 3/32 inch) of the following: collet, collet body, and 7-inch 2% ceriated tungsten electrode.



**Accessory Kit AK-150MFC**  
Allows welding operators to customize their standard A-150 (WP-17) or A-125 (WP-9) TIG torch for their specific application. Kit converts into 28 different torch styles while using the A-150 and A-125 existing cable. Features collets, collet bodies, nozzles, torch heads, handle and more.

**Extension Kit EK-2-25-R** 25 ft. (7.6 m), rubber



**Cable Covers**  
**WC-3-10** 10 ft. (3 m)  
**WC-3-22** 22 ft. (6.7 m)  
**WC-3-48** 48 ft. (14.6 m)



**Wireless Remote Foot Control 300429**  
For remote current and contactor control. Receiver plugs directly into the 14-pin receptacle of Miller machine. 90-foot (27.4 m) operating range.



**Wireless Remote Hand Control 300430**  
For remote current and contactor control. Receiver plugs directly into the 14-pin receptacle of Miller machine. 300-foot (91.4 m) operating range.



**RCC-14 Remote Contactor and Current Control 151086**  
East/west rotary-motion fingertip control attaches to TIG torch using two hook-and-loop fasteners. Includes 26.5-foot (8 m) cord with 14-pin plug.



**RCCS-14 Remote Contactor and Current Control 043688**  
North/south rotary-motion fingertip control attaches to TIG torch using two hook-and-loop fasteners. Includes 26.5-foot (8 m) cord with 14-pin plug.

Distributed by:

**SUPERTECH SERVICES PVT. LTD.** Plot :- A253, Road 30B, Wagle Industrial Estate, Thane (West), Maharashtra, India. Tel :- +91 91360 97134 / +91 91360 97135 Email :- [ssl@supertechservices.in](mailto:ssl@supertechservices.in) For more information visit us at : [www.supertechservices.in](http://www.supertechservices.in)

