

Weldcraft™ W-180

Formerly WP-24W

**Hand-Held Water-Cooled
TIG Welding Torches**



Quick Specs

Model
W-180

Applications

Aerospace
Food/beverage industry
Light and heavy manufacturing
Maintenance and repair

Petro/chemical
Precision fabrication
Shipbuilding

Rated Output

DC: 180 A, AC: 115 A

Duty Cycle 100%

Electrode Range

.020–3/32 in. (0.5–2.4 mm)

W-180 TIG torch

Formerly known as the WP-24W, the W-180 is one of the smallest water-cooled TIG torches on the market. The W-180 is designed for welding in confined areas that require high amperage with the use of a water-cooled system.

Use high amperage in confined areas for efficient welding.

Superior maneuverability in limited-access locations with the compact torch body.

Excellent weld capacity without increasing torch size, due to the efficient cooling system.

Comfort and control are increased with the light, well-balanced body design.

**W-180
(WP-24W)**

Note: Torch delivered may vary slightly from image shown.



Miller Electric Mfg. Co.
An ITW Welding Company
1635 West Spencer Street
P.O. Box 1079
Appleton, WI 54912-1079 USA

Equipment Sales US and Canada
Phone: 866-931-9730
FAX: 800-637-2315
International Phone: 920-735-4554
International FAX: 920-735-4125

MillerWelds.com



Torch Packages

| Models | | Braided Rubber | | Vinyl | |
|-----------|----------|------------------|----------------|------------------|----------------|
| Old Model | New Name | 12.5 ft. (3.8 m) | 25 ft. (7.6 m) | 12.5 ft. (3.8 m) | 25 ft. (7.6 m) |
| WP-24W | W-180 | WP-24W-12-R | WP-24W-25-R | WP-24W-12 | WP-24W-25 |

Torch packages include torch body, handle, power cable, gas hose, water hose, and collet body wrench.

Connectors

Power cable connectors



195380
50 mm Dinse-style gas thru with gas and water return lines for water-cooled torch.



195377
50 mm Dinse-style with water return line for water-cooled torch.



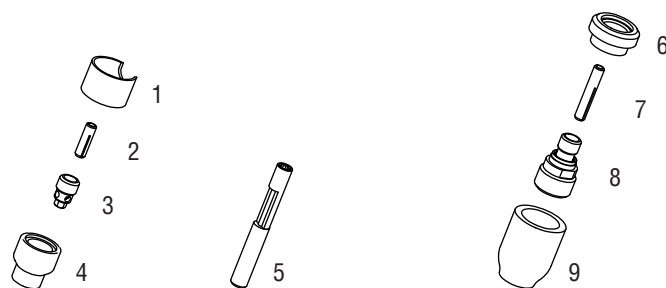
45V11
Power cable adapter for water-cooled torch.



225028
50 mm thread-lock-style for water-cooled torch.

| Machines | Connection Type | 1-Piece Power Cable Connectors |
|---|-----------------------------|--------------------------------|
| TIG Machines | | |
| Syncrowave® 200/210 | 50 mm Dinse-style gas thru | 195380 |
| Syncrowave® 250 DX/350 DX (Dinse) | 50 mm Dinse-style | 195377 |
| Syncrowave® 250 DX/350 DX (stud) | 1/2 in. stud | 45V11 |
| Dynasty® 200/210/280/350, Maxstar® 200/210/280/350 | 50 mm Dinse-style | 195377 |
| Dynasty® 700, Maxstar® 700 | 50 mm thread-lock | 225028 |
| Multiprocess Machines | | |
| Dimension™ 302/452/NT 450/652 | 1/2 in. stud | 45V11 |
| PipeWorx | 1/2 in. stud | 45V11 |
| XMT® 304/350 | 50 mm Dinse-style | 195377 |
| XMT® 450 | 1/2 in. stud | 45V11 |
| Engine-Driven Machines | | |
| Most Big Blue®, Trailblazer®, Bobcat™, Blue Star® and Wildcat® models | 1/2 in. stud | 45V11 |
| Big Blue® 450 Duo CST | 50 mm Dinse-style | 195377 |
| General Reference | | |
| | 50 mm Dinse-style | 195377 |
| | 50 mm Dinse-style gas thru | 195380 |
| | 50 mm thread-lock | 225028 |
| | 1/2 in. stud | 45V11 |
| Other Adapter | | |
| | Stud to Dinse-style adapter | 232728 |

Consumables (Refer to Owner's Manual for additional replacement parts.)



Non-Gas Lens

| Electrode Size — inch (mm) | .020 (0.5) | .040 (1.0) | 1/16 (1.6) | 3/32 (2.4) |
|-----------------------------|------------|------------|------------|------------|
| 1 Insulator (required) | 53N22 | 53N22 | 53N22 | 53N22 |
| 2 Collet | 53N15 | 53N16 | 53N14 | 24C332 |
| 3 Collet Body | 53N17 | 53N18 | 53N19 | 24CB332 |
| Nozzle Size — size # (inch) | .165 | 4 (1/4) | 5 (5/16) | 6 (3/8) |
| 4 Alumina | — | A53N24 | A53N25 | A53N27 |
| * Lava | 53N23 | 53N24 | 53N25 | 53N27 |
| * Long Lava | — | 53N28 | — | 53N26 |

Collet Body Wrench

5 53N20

Gas Lens

| | | | | | |
|-----------------------------|------------|------------|------------|------------|---------|
| Electrode Size — inch (mm) | .020 (0.5) | .040 (1.0) | 1/16 (1.6) | 3/32 (2.4) | |
| 6 Insulator (required) | 53N66 | 53N66 | 53N66 | 53N66 | |
| 7 Collet | 53N62 | 53N63 | 53N64 | 24GLC332 | |
| 8 Gas Lens | 45V41 | 45V42 | 45V43 | 45V44 | |
| Nozzle Size — size # (inch) | 4 (1/4) | 5 (5/16) | 6 (3/8) | 7 (7/16) | 8 (1/2) |
| 9 Alumina Gas Lens | 53N58 | 53N59 | 53N60 | 53N61 | 53N61S |

*Not shown.

Tungsten

Tungsten for the most demanding TIG welding applications!

Available in four types and industry-standard diameters, our line of Weldcraft™ tungsten electrodes has undergone rigorous testing to ensure the highest quality and durability. Color-coded packages include ten 7-inch (175 mm) tungsten electrodes.

Note: Refer to manufacturer SDS sheets for proper preparation and safety. Use proper ventilation/capture during preparation. Refer to manufacturer warning regarding ventilation.



| Type | Diameter in. (mm) | Part # | Type | Diameter in. (mm) | Part # |
|--|-------------------|----------|---|-------------------|---------|
| 2% Ceriated (EWCe-2) | | | Pure (EWP) | | |
| Performs well in DC welding and arc starting at low-current settings, and offers excellent performance in AC processes. | 0.040 (1.0) | WC040X7 | Forms a clean, balled end when heated and provides good arc stability for AC welding with a balanced or unbalanced squarewave or sine wave. | 0.040 (1.0) | — |
| | 1/16 (1.6) | WC116X7 | | 1/16 (1.6) | WP116X7 |
| | 3/32 (2.4) | WC332X7 | | 3/32 (2.4) | WP332X7 |
| | 1/8 (3.2) | WC018X7 | | 1/8 (3.2) | WP018X7 |
| | 5/32 (4.0) | WC532X7 | | 5/32 (4.0) | — |
| 2% Lanthanated (EWLa-2) | | | Rare Earth (EWG) | | |
| Provides excellent arc starting, arc stability and re-ignition, and less tip erosion in AC or DC welding. Can substitute for 2% Thoriated. | 0.040 (1.0) | WL2040X7 | Combines the best of all alloying elements, and provides excellent arc stability in AC or DC welding. | 0.040 (1.0) | — |
| | 1/16 (1.6) | WL2116X7 | | 1/16 (1.6) | WG116X7 |
| | 3/32 (2.4) | WL2332X7 | | 3/32 (2.4) | WG332X7 |
| | 1/8 (3.2) | WL2018X7 | | 1/8 (3.2) | WG018X7 |
| | 5/32 (4.0) | WL2532X7 | | 5/32 (4.0) | — |

Replacement Parts

| | | |
|--|------------------|----------------|
| Torch Body | | |
| W-180 | | WP-24W |
| Handles | | |
| Ribbed | | H100R |
| Knurled | | H100 |
| Braided Rubber Power Cables and Hoses | | |
| | 12.5 ft. (3.8 m) | 25 ft. (7.6 m) |
| Power Cable | 45V03RR | 45V04RR |
| Water Hose* | 45V07RBB | 45V08RBB |
| Gas Hose* | 45V09R | 45V10R |
| Vinyl Power Cables and Hoses | | |
| | 12.5 ft. (3.8 m) | 25 ft. (7.6 m) |
| Power Cable | 45V03HD | 45V04HD |
| Water Hose* | 45V07HD | 45V08HD |
| Gas Hose* | 45V09 | 45V10 |

*Requires hose clamp 53N04.

Genuine Miller® Accessories

Extension Kit
EK-1-25-R 25 ft. (7.6 m), rubber



Cable Covers
WC-3-22 22 ft. (6.7 m)



14-pin receptacle of Miller machine. 90-foot (27.4 m) operating range.



Wireless Remote Foot Control 300429
For remote current and contactor control. Receiver plugs directly into the 14-pin receptacle of Miller machine. 90-foot (27.4 m) operating range.



RCC-14 Remote Contactor and Current Control 151086

East/west rotary-motion fingertip control attaches to TIG torch using two hook-and-loop fasteners. Includes 26.5-foot (8 m) cord with 14-pin plug.



RCCS-14 Remote Contactor and Current Control 043688

North/south rotary-motion fingertip control attaches to TIG torch using two hook-and-loop fasteners. Includes 26.5-foot (8 m) cord with 14-pin plug.



Low-Conductivity TIG Coolant 043810

Sold in multiples of four in 1-gallon recyclable plastic bottles. Miller coolants contains a base of ethylene glycol and deionized water to protect against freezing to -37° Fahrenheit (-38°C) or boiling to 227° Fahrenheit (108°C).

Distributed by:

SUPERTECH SERVICES PVT. LTD. Plot :- A253, Road 30B, Wagle Industrial Estate, Thane (West), Maharashtra, India. Tel :- +91 91360 97134 / +91 91360 97135 Email :- ss@supertechservices.in For more information visit us at : www.supertechservices.in



Miller®

The Power of Blue®